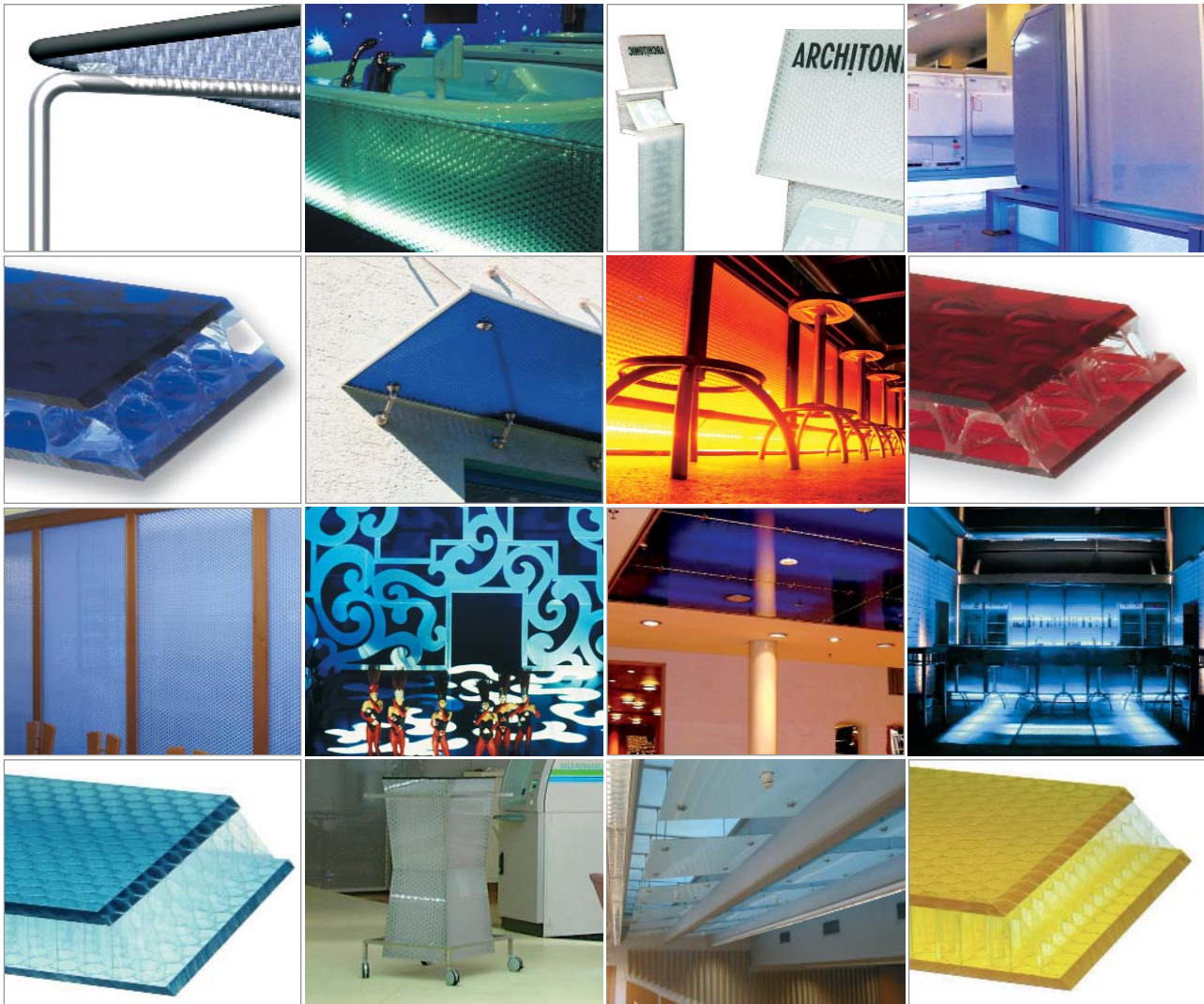


FOTOblizz



Dear Reader,

Our products have an extremely large range of applications. We constantly develop new solutions together with and for our customers. You will find a selection of already implemented projects in this folder. A real page-turner.

Everything at a glance ...

FOTOblizz is a compilation of our reference projects for architects, designer, investors and decision makers.

In this folder we present some application examples for:

architecture, design items, exhibition stands, shop design, stage settings, interior design, displays, illuminated advertising, dispenser, point-of-sales, window-dressing, décor items, shelves, illuminants, illuminated ceilings, furniture design, partitions, sliding doors, raised floors, balustrade glazing, facades, canopies

and more. Just turn over to the next page.

We Expand Your Business

Architecture + Exterior Applications

Facades, cladding, canopies, marquees, balustrade glazing, blinds, noise barriers, event and stage units, displays, billboards

Company Gschwend / SUI



+ clear-**PEP**® UV 20

Canopy for company Brunner AG / Thun.
Translucent PepCore™ core with transparent, UV-protected top layers.

Advantage of this application:

- unique optical features
- outstanding stiffness properties
- high impact and hail resistance
- UV and weather resistance
- compatible with standard profiles

Partner: Hess & Co AG / SUI



Licotec Daklicht B.V. / NED



+ **AIR-board**® UV 20

Skylights for school building / Appeldoorn.
Translucent PC honeycomb core with UV protected top layers.

Advantage of this application:

- excellent light transmission
- outstanding insulation properties
- high impact resistance
- exceptional hail resistance
- UV and weather resistance

Partner: Enista bv / NED



Interlux Hirsch GmbH / AUT

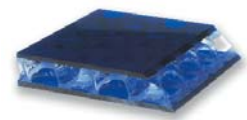


+ clear-**PEP**® color dark blue 627

Canopy over an office building entrance.
Translucent PepCore™ core with colored acrylic sheets.

Advantage of this application:

- unique optical features
- innovative light scattering and anti-glare effects
- excellent UV resistance
- highest stiffness properties



Retirement residence "Sunnetal" / SUI



+ clear-**PEP**® GRP 16

Carport at the retirement residence "Sunnetal" in Fällanden / Switzerland. Special panel with top layers made of UP-GRP ecru gel coat and transparent PepCore™ core.

Advantage of this application:

- translucent optical features
- light transmission and anti-glare effects
- excellent stiffness
- highest hail impact resistance
- large dimensions possible

Partner: Hess & Co AG / SUI



Architecture + Exterior Applications

Facades, cladding, canopies, marquees, balustrade glazing, blinds, noise barriers, event and stage units, displays, billboards

Golf club St. Oswald / AUT



+ clear-**PEP**® UV 20

The architectural office "x architekten" designed this golf club building with a passive house façade. Translucent PepCore™ core with UV protected transparent top layers.

Advantage of this application:

- appealing design
- excellent thermal insulation
- UV and weather resistance
- outstanding stiffness properties
- easy to install



Interlux Hirsch GmbH / AUT



© by www.interlux.at

+ clear-**PEP**® satin opal

Noise barrier and blinds for a one-family home in St. Valentin. The well-trying PepCore™ core combined with two differently dyed PMMA top layers with satined surface.

Advantage of this application:

- unique translucent optics
- scratch resistant satined surface
- UV and weather resistant
- excellent stiffness
- both sides usable



Steinkellner Peter Waschanlagenbau GmbH / AUT + clear-**PEP**® UV 20 with sealed edges



© by www.interlux.at

Car wash facility. Translucent PepCore™ core with transparent, UV-protected top layers.

Advantage of this application:

- innovative translucent optical properties
- exceptional UV and weather resistance
- sealed waterproof edges
- high impact resistance
- excellent stiffness



Partner: Interlux Hirsch GmbH / AUT

Blenke Design / AUT



+ clear-**PEP**® UV 20

Stage scenery elements Bregenz Festival. Translucent PepCore™ core with transparent, UV protected top layers.

Advantage of this application:

- unique light scattering
- excellent UV and weather resistance
- high impact resistance
- easy to handle and process



Architecture + Exterior Applications

Facades, cladding, canopies, marquees, balustrade glazing, blinds, noise barriers, event and stage units, displays, billboards

Atelier Zen+dCo / FRA



+ clear-**PEP**® 16

Origami cubes for "Paris Rive Gauche" exhibition in Paris. Translucent PepCore® core with transparent top sheets.

Advantages of this application:

- innovative translucent optic
- excellent light transmission
- high impact resistance
- outstanding stiffness
- easy to handle and process



Strasser Karosseriebau GmbH / AUT

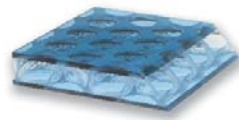


+ clear-**PEP**® color light blue 625

Mobile show container "BlueBoxx" for the newspaper "Salzburger Nachrichten". Translucent PepCore™ core with colored acrylic top sheets.

Advantages of this application:

- innovative optical properties
- outstanding UV-stability
- excellent stiffness
- easy to handle and process



Schuha Messestand GmbH / AUT



+ **AIR-board**® 19

Presentation display "Euro-Cube" for Raiffeisenverband Salzburg. Translucent honeycomb with transparent top sheets.

Advantages of this application:

- innovative translucent optical features
- excellent light transmission
- light weight (3.1 kg/m²)
- high impact resistance
- fire class B1 tested to DIN 4102
- compatible with standard profiles



PFA Partner für Fahrzeugausstattung GmbH / GER



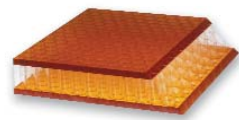
+ **AIR-board**® color orange 478

Canopy on a train cabin.

Translucent honeycomb core with transparent acrylic sheets.

Advantages of this application:

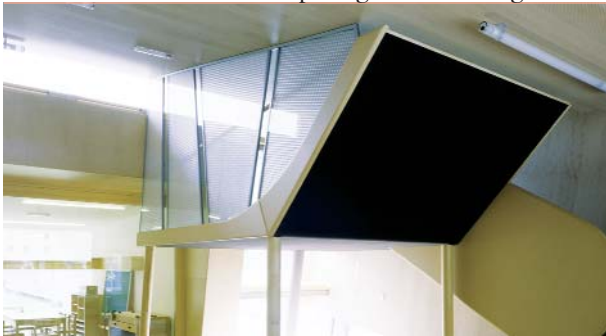
- innovative optical features
- outstanding UV resistance
- excellent stiffness
- easy to install



Architecture + Interior Design

Interior construction, partitions, design items, office fittings, furniture

Halle 1 Architekturbüro Dipl.-Ing. Sailer & Lang / AUT + clear-PEP® 19



Partition and playground for a kindergarten in Salzburg.
Translucent PepCore™ core with transparent top sheets.

Advantages of this application:

- exclusive optical features
- outstanding light transmission properties
- excellent stiffness
- compatible with standard profiles
- easy to handle and process



Burkhardt Leitner constructive GmbH & Co KG / GER + PepCore™ 22



Walls for mobile office units.
Translucent PepCore™ core unpolished.

Advantages of this application:

- sophisticated optic
- excellent light transmission
- outstanding stiffness
- compatible with standard profiles
- easy to handle and process



Olymp-Zentrum Stuttgart / GER



+ clear-PEP® satin opal 27014

Hotel reception counter.
Translucent PepCore™ core with translucent, satin colored acrylic sheets.

Advantages of this application:

- exclusive optic caused by perfect interplay between structure and color
- scratch resistant, velvety surface
- no visible fingerprints
- pleasant haptics
- excellent stiffness
- easy to install



SWAP Schulz, Wasmeyer & Partner / AUT



+ clear-PEP® UV 20

Reception and teller area.
Translucent PepCore™ core with transparent, UV protected top sheets.

Advantages of this application:

- appealing optical features
- unique light scattering
- fire class B1 according to ÖNORM B 3800
- outstanding stiffness
- easy to handle and process



Architecture + Interior Design

Interior construction, partitions, design items, office fittings, furniture

Architectural company Petrovic / AUT



+ clear-**PEP**® 19

Office entrance door and frame made of translucent PepCore™ core with transparent top sheets.

Advantages of this application:

- innovative translucent optical properties
- unique light scattering
- excellent acoustical absorption
- high impact resistance
- easy to install
- light weight

Partner: Interlux Hirsch GmbH / AUT



SWAP Schulz, Wasymer & Partner / AUT



+ clear-**PEP**® UV 20

Trolleys.

Translucent PepCore™ core with transparent, UV protected top sheets.

Advantages of this application:

- unique light transmission
- design freedom
- outstanding stiffness
- easy to handle and process



Reichardt Czerner + Partner Architektur bda / GER + **AIR-board**® color orange 478



Office door.

Translucent honeycomb core with translucent, colored acrylic sheets.

Advantages of this application:

- up-to-date design
- excellent light transmission, despite screen from view
- outstanding stiffness
- easy to install



Studio Beat Karrer / SUI



+ clear-**PEP**® strong 40

“Scooter” – table designed and built by Studio Beat Karrer.

Translucent PepCore™ core with strong transparent top sheets.

Advantages of this application:

- trendy optical features
- excellent stiffness
- high impact resistance
- easy to handle and process
- large variety of dimensions

Partner: Hess & Co AG / SUI



Architecture + Interior Design

Interior construction, partitions, design items, office fittings, furniture

R2 Architecture / GBR



+ AIR-board® color red 502

Décor items for the "Cream Bar".
Translucent honeycomb with transparent acrylic top sheets.

Advantages of this application:

- innovative translucent optical features
- unique light scattering
- compatible with standard profile systems
- easy to handle and process



Partner: 3D Foils Ltd. / GBR

Event and catering location "Die Werkstatt" / AUT



+ clear-PEP® color orange 478

Event and catering location "Die Werkstatt" in Rankweil.
Translucent PepCore™ core with colored acrylic sheets.

Advantages of this application:

- sophisticated design
- exceptional ambience with unique light effects
- highest stiffness
- easy to install
- physiological unobjectionable



Partner: Interlux Hirsch GmbH / AUT

Television studio Channel VRT / BEL



+ clear-PEP® stage 40

Stage for the Belgium TV-show "Advocaat van de diuvel" on Channel VRT.
Translucent PepCore™ core with translucent top sheet structure.

Advantages of this application:

- state-of-the-art design
- outstanding light scattering
- excellent scratch resistance
- anti-slip surface
- light weight / high stiffness



Partner: Vink N.V. / BEL

Dorner Kunststofftechnik GmbH / AUT



+ clear-PEP® 20

A stage at the Bregenz Festival made of clear-PEP® panels with translucent PepCore™ core with transparent top sheets.

Advantages of this application:

- unique light scattering
- impressive light effects
- highest stiffness and stability
- large panel sizes possible
- easy to install



Foto: Karl Forster

Ceiling Parts + Illuminated Items

Suspended illuminated and/or sound absorbing ceilings, décor items, illuminated raised floors

Stork Innenausbau / GER



+ clear-**PEP**® color dark blue 627

Suspended illuminated ceiling in fashion outlet store in Stralsund / GER. Translucent PepCore™ core with colored acrylic top sheets.

Advantages of this application:

- exclusive and trendy optical features
- fantastic ambience created by illumination
- high stiffness
- fire class B2 according to DIN 4102
- special dimensions possible



Innenausbau Mäder AG / SUI



+ **AIR-board**® MAKUSTIK 19

Acoustics ceiling panel for lecture hall at the University of Europe / GER. Translucent honeycomb core with perforated, non-reflective top sheets.

Advantages of this application:

- unique translucent optic
- excellent light transmission
- high sound absorption
- light weight (3.5 kg/m³)
- fire class B1 according to DIN 4102
- easy to install



“de Bijenkorf” Enschede / NED



+ clear-**PEP**® UV 20

Illuminated shop element in the Enschede branch of “de Bijenkorf”. Translucent PepCore™ core with transparent, UV resistant top sheets. Architects: Virgile + Stone and Bijenkorf. Design team Moria Chrichton / Fons Kooymans. Shop fitter: Intos

Advantages of this application:

- unique optical features
- fantastic light transmission
- high heat resistance
- excellent form stability

Partner: Enista bv / NED



ESPRIT / AUS



+ clear-**PEP**® 16

Wall units for ESPRIT store in Australia. Translucent PepCore™ core with transparent top sheets.

Advantages of this application:

- innovative optical properties
- unique light scattering
- easy to handle and process
- large variety of dimensions

Partner: Glenpar PTY Ltd. / AUS



Ceiling Parts + Illuminated Items

Suspended illuminated and/or sound absorbing ceilings, décor items, illuminated raised floors

Civil Service St. Gallen County / SUI



+ AIR-board® MAKUSTIK 18

Square ceiling lights made of acoustic panels installed in the meeting room of the civil service organisation "Kinder- und Jugendpsychiatrische Dienste" of the St. Gallen county. Translucent honeycomb core with perforated, non-reflective top sheets.

Advantages of this application:

- excellent light transmission
- high sound absorption
- fire class B1 according to DIN 4102

Partner: Innenausbau Mäder AG / SUI



Linie 2 GbR / GER



+ clear-PEP® UV 20

Bar counter for „Philips Road Show 2003“ an event by AIT. Translucent PepCore™ core with transparent, UV resistant top sheets.

Advantages of this application:

- innovative translucent optical properties
- unique light transmission
- fire class B1 according to ÖNORM B 3800
- high impact resistance
- compatible with standard profiles



3D Foils Ltd. / GBR



+ clear-PEP® stage 40

Table dance stage. Translucent PepCore™ core with structured, translucent top sheets.

Advantages of this application:

- top surface structure with excellent light scattering
- sophisticated optical properties
- excellent scratch resistance
- anti-slip surface
- light weight / high stiffness
- easy to handle and install



Blizzard Composite GmbH / AUT



+ clear-PEP® stage 40

Illuminated floor at the EuroShop 2002 in Dusseldorf. Translucent PepCore™ core with structured, anti-slip surface.

Advantages of this application:

- unique optic
- scratch resistant and anti-slip surface
- fire class B1 according to ÖNORM B 3800
- light weight / high load capacity
- easy to install



Partitions + Paravents

Swedish Post AB / SWE



+ AIR-board® 19

Partitions in office building of Swedish Post AB.
Translucent honeycomb core with transparent top sheets.

Advantages of this application:

- excellent light transmission
- outstanding thermal insulation
- high impact resistance
- fire class B1 according to DIN 4102
- compatible with standard profiles



Partner: Essaplast i Stockholm AB / SWE

J. u. A. Frischeis GmbH / AUT



+ clear-PEP® UV 20

Partition between meeting room and offices.
Translucent PepCore™ core with transparent top sheets.

Advantages of this application:

- unique design
- fire class B1 according to ÖNORM B 3800
- excellent stiffness
- outstanding stability
- possible in max. thickness of 80 mm



Allgemeines Krankenhaus Zell am See / AUT



+ AIR-board® 19

Partition wall and door at the hospital in Zell am See.
Translucent honeycomb core with transparent top sheets.

Advantages of this application:

- excellent light transmission
- high stiffness
- fire class B1 according to DIN 4102
- compatible with standard profile systems
- easy to handle and process



Blizzard Sport GmbH / AUT



+ AIR-board® UV 20

Partition walls for open-plan offices.
Translucent honeycomb core with UV protected transparent top sheets.

Advantages of this application:

- translucent optical features
- excellent light transmission
- outstanding stiffness
- high impact resistance
- fire class B1 according to DIN 4102
- compatible with standard profile systems



Partitions + Paravents

Enista bv / NED



+ AIR-board® color orange 478

Office partitions and furniture.
Translucent honeycomb with colored acrylic top sheets.

Advantages of this application:

- exclusive and trendy optical features
- excellent stiffness
- easy to handle and process
- physiological unobjectionable



Allgemeines Krankenhaus Zell am See / AUT



+ AIR-board® 19

Partition.
Translucent honeycomb core with transparent top sheets.

Advantages of this application:

- excellent light transmission
- translucent optic
- high stiffness
- fire class B1 according to DIN 4102
- easy to install



Innenausbau Mäder AG / SUI



+ AIR-board® MAKUSTIK 19

Sound absorbing paravent.
Translucent honeycomb core with perforated top sheets.

Advantages of this application:

- translucent optical properties
- excellent light transmission
- outstanding sound absorption
- fire class B1 according to DIN 4102
- easy to handle and process



Fahren Gärtner GmbH / AUT



+ AIR-board® 19

Office partitions.
Translucent honeycomb core with transparent top sheets.

Advantages of this application:

- excellent light transmission features
- outstanding thermal insulation
- fire class B1 tested to DIN 4102
- standard panels available



Exhibitions

MSM Messe Service Merkhoffer GmbH / GER



+ clear-PEP® stage 40

Translucent, walkable floor panel – exhibition stand in Frankfurt at IAA 2001.

Translucent PepCore™ core with structured translucent surface.

Advantages of this application:

- excellent light scattering due to top surface structure
- unique optical features
- outstanding scratch resistance
- anti-slip surface
- high impact resistance
- easy to install



Vitra GmbH / GER



+ AIR-board® 19

Partitions – exhibition booth at the Orgatec in Cologne 2002.

Translucent honeycomb core with transparent top sheets.

Advantages of this application:

- innovative translucent optical features
- excellent light transmission
- light weight (3.1 kg/m²)
- fire class B1 tested to DIN 4102
- easy to handle and process
- compatible with standard profiles



ADZ Ausstellungs- und Dekorationservice / AUT



+ AIR-board® 19

Exhibition container in Verona / Italy.

Translucent honeycomb core with transparent top sheets.

Advantages of this application:

- innovative translucent optical properties
- unique light scattering features
- fire class B1 according to DIN 4102
- light weight (3.1 kg/m²)



Blizzard Composite GmbH / AUT



+ clear-PEP® frost

Booth walls at EuroShop 2002 in Dusseldorf.

Translucent PepCore™ core with satin coated top sheets.

Advantages of this application:

- unique light scattering due to surface structure
- large variety of colors
- outstanding scratch resistance
- excellent stiffness
- high impact resistance
- easy to handle



Exhibitions

Vitra GmbH / GER



+ AIR-board® 19

Booth walls at the Orgatec 2002 in Cologne.
Translucent honeycomb core with transparent top sheets.

Advantages of this application:

- innovative optics
- excellent light transmission
- fire class B1 according to DIN 4102
- light weight (3.1 kg/m²)
- compatible with standard profiles



Gemeco Messe- und Werbetechnik GmbH / GER



+ AIR-board® 19

Displays for exhibition booth Amphenol-Tuchel Electronics GmbH.
Translucent honeycomb core with transparent top sheets.

Advantages of this application:

- innovative translucent optical features
- unique lightning effects possible
- fire class B1 tested to DIN 4102
- light weight (3.1 kg/m²)
- large variety of dimensions



Blizzard Sport GmbH / AUT



+ clear-PEP® 16

Walls – exhibition booth at the ISPO in Munich 2003
Translucent PepCore™ core with transparent top sheets

Advantages of this application:

- unique light scattering
- fantastic lightning effects
- excellent stiffness
- easy to handle and process



EXPOLAB GmbH / GER



+ AIR-board® frost opal

BMW AG – international press conference at the Salon d'Automobil Genève 2004
Concept / Design: EXPOLAB – Munich.
Installation: Zeeh Design – Puchheim.
Translucent honeycomb core with satin coated top sheets.

Advantages of this application:

- excellent light transmission
- large variety of colors
- high stiffness
- fire class B1 according to DIN 4102



Shop Fitting + Shop Window Decoration

Laufen Austria AG / AUT



+ clear-PEP® satin blue 23074

Design and implementation: Hess Design.
Metal construction: Frais & Perlinger / Vienna
Presentation of the new ceramic sanitary line "Living" / Milano.
Translucent PepCore™ core with colored satin acrylic sheets.

Advantages of this application:

- interesting optic
- scratch resistant, velvety surface
- no visible fingerprints
- excellent stiffness



Shipyards Frauscher GesmbH & Co KG / AUT



© by www.interlux.at

+ clear-PEP® stage 40

Show room of the shipyard Frauscher in Gmunden.
Translucent PepCore™ core with structured translucent top sheets.

Advantages of this application:

- top surface structure with excellent light scattering
- sophisticated optic
- excellent scratch resistance and anti-slip surface
- light weight / high stiffness
- easy to install



Partner: Interlux Hirsch GmbH / AUT

“de Bijenkorf” Enschede / NED



+ clear-PEP® UV 20

Shop window decoration in department store Bijenkorf Enschede / Netherlands.

Architects: Virgile + Stone and Bijenkorf Design Team Moira Chrichton / Fons Kooymans. Shop fitter: Intos

Advantages of this application:

- unique optical features
- fantastic light transmission
- high stiffness
- excellent UV resistance



Partner: Enista bv / NED

Abado Bad & Wellnes GmbH / AUT



+ clear-PEP® UV 20

Showroom “Bäderparadies” Eugendorf / Salzburg
Translucent PepCore™ core with transparent top sheets.

Advantages of this application:

- innovative translucent optical properties
- unique light transmission
- excellent stiffness
- fire class B1 according to ÖNORM B 3800
- easy to handle and install
- large variety of dimensions



Shop Fitting + Shop Window Decoration

Miele AG / AUT



+ AIR-board® UV 20

Shop design elements in showroom / Salzburg.
Translucent honeycomb core with transparent top sheets.

Advantages of this application:

- outstanding light transmission
- unique lightning effects possible
- fire class B1 tested to DIN 4102
- easy to handle and install



Fashion store Folger / AUT



+ clear-PEP® color red 502

Shop interior in Graz. Design by Goess.Design.Group.
Translucent PepCore™ core with colored acrylic sheets.

Advantages of this application:

- sophisticated design
- excellent illumination properties
- high stiffness
- easy to handle and install
- physiological unobjectionable



Partner: Interlux Hirsch GmbH / AUT

Abado Bad & Wellness GmbH / AUT



+ clear-PEP® 19

Shop design elements – showroom Eugendorf.
Translucent PepCore™ core with transparent top sheets.

Advantages of this application:

- interesting illumination possible
- unique structure
- outstanding stiffness
- easy to handle and install



Architonic AG / SUI



+ AIR-board® 16

Point-of-sales display for the furniture show IMM in Cologne 2003.
Translucent honeycomb core with transparent top sheets.

Advantages of this application:

- design freedom
- light weight (3.1 kg/m₂)
- easy to handle and install
- printable (screen and digital printing)



Partner: Hess & Co AG / SUI



New Age Polymers Pty Ltd
47 Wentworth Avenue
Sydney NSW 2000

Tel: +61 2 9212 7845
Fax: +61 2 9212 7846
Email: enquiries@newagepolymers.com.au
Web: www.newagepolymers.com.au